

Ramaria rasilispora sp. nov.

var. rasilispora

(Pl. XXII Fig. 84)

Basidiocarpia terrestria in sylvis coniferarum vere et aestate crescentia, 5-15 cm alto 6-15 cm lata, usque ad septuplo e basi sursum ramificantia; basis simplex 3-6 x 2.5-5.5 cm, sordide alba; rami obscure griseiaurantiaci (5A, B4-6) apicibus concoloribus; contextus albus, consistentia carnis carnosio-fibrosa in siccitate dura vel parum cretaceo-friabilis, odore fungali vel leniter ingrato. Contextus stipitis leniter amyloideus. Sporae 8-11 x 3-4 $\mu$  medio numero 9.5 x 3.4 $\mu$ , cylindratae, laeves vel obscure verruculosae. Basidia 47-60 x 8-10 $\mu$  basi fibulata. Hyphae contexti 4-9 $\mu$  crassae, tenuitunicatae, fibulis abundantibus, tumoribus prope septa 8-18 $\mu$  crassis; hyphae gloeoplerae raras 3-5.5 $\mu$  crassae, hic illis usque ad 12 $\mu$  inflatae.

Holotypus M-956 in area ambusta in monte Evergreen nominato, prope oppidum Skykomish nominatum in comitato Snohomish pagi washingtoniensi 5/20/68 lectus, in herbario SUCO conservatus.

Basidiocarp: Habitat--terrestrial, collected in the spring and summer in coniferous woods. Color--stipe and lower branches of the fresh fruiting body off-white where underground, young branches dull "light orange" (5A4-5) to "apricot yellow" (5B6) maturing pale "grayish orange" (5B4-5), apices concolorous or turning "dark brown" (7E6) with age or on drying, context white. Dried specimens "pale yellow" (4A3) to "grayish orange" (5B3-5), apices sometimes darker and the context "yellowish white" (4A2-4). Taste--not distinctive. Odor--mild to distinctively fungoid, or somewhat unpleasant. Form--fruiting bodies large, broad, 5-15 x 6-15 cm.

Stipe single, conical, stout, 3-6 x 2.5-5.5 cm; in mature basidiocarps branching up to 7 times from the base, nodes polychotomous or dichotomous, axils acute or turbinate, branches straight, moderately divergent and thickish in appearance, primary branches very stout, 2-4 cm diam, upper ones mostly 0.2-1.5 cm diam, internodes lengthening up to 5 cm in mature fruiting bodies; polydigitate near the apices; apices obtuse to rounded. Consistency--fleshy-fibrous or punky-fibrous in the stipe when fresh, drying hard to chalky-friable.

Macrochemical Reactions: Context of stipe weakly amyloid, the reaction slow, requiring about 1 1/2 hrs; no significant color changes occurring within 15 min of application to branch sections of pyrogallol,  $\alpha$ -naphthol, guaiac, guaiacol, phenol and aniline.

Microscopic Structures: Spores--average 9.5 x 3.4 $\mu$ , range 8-11 x 3-4 $\mu$ , cylindrical, entirely smooth to very finely warted, warts cyanophilous, obscure under 1000 X magnification. Hymenium--basidia clavate, 47-60 x 8-10 $\mu$ , basally clamped, 2-4-sterigmate, mostly 4; sterigmata mostly 4 $\mu$  in length (-7 $\mu$ ), slightly incurved or straight, slightly divergent; hymenium about 70 $\mu$  thick and the subhymenium 20-25 $\mu$  thick. Subhymenial hyphae--interwoven, 2.5-4 $\mu$  diam, clamped, thin-walled. Contextual hyphae--surface of the stipe with a layer about 100-300 $\mu$  thick of loosely interwoven hyphae of narrow diam, 3-4 $\mu$ , the context proper interwoven, with non-inflated cells up to 12 $\mu$  diam, context of the branches parallel, non-inflated, 4-9 $\mu$  diam, walls smooth to slightly fluted, thin, cyanophilous, cyanophilous globular inclusions common, ampulliform inflations near septa 8-18 $\mu$  diam, walls of the swellings nearly smooth in the branches, distinctly ornamented in the stipe; clamps abundant; gleoplerous hyphae rare, 3-5.5 $\mu$  diam or up to 12 $\mu$  diam in localized bulbous regions.

Collections Examined:

<u>Number</u>	<u>Location</u>	<u>Date</u>
*M-956,		
	Holotype Evergreen Mt Burn, near Skykomish, Snohomish Co	5/20/68
M-2334	E Hayden Creek, Idaho (K. Scates 550)	5/27/70
M-2335	Lost Creek Area, near Priest Lk, Idaho (K. Scates 610)	6/14/70
M-2362	Near Spirit Lk, Idaho (K. Scates 599)	6/9/70

Discussion: Refer to the discussion under R. magnipes.

var. scatesiana var. nov.

A varietate rasilispora colore basidiocarpiis differt; rami speciminum immaturorum vel maturorum pallide lutei (4-5A2-4).

Holotypus M-2344 prope oppidum East Hayden nominatum pago Idaho 6/7/70 lectus, in herbario SUCO conservatus.

Basidiocarp: Variety scatesiana differs from var. rasilispora in the color of fruiting bodies, branches of young and mature specimens varying from "yellowish white" (4A2) to "light yellow" (4-5A3-4). In other characteristics it appears to be the same.

Collections Examined:

<u>Number</u>	<u>Location</u>	<u>Date</u>
M-2337	Canfield Mt, Idaho (K. Scates 555)	5/29/70
*M-2344	E Hayden, Idaho (K. Scates 592), Holotype	6/7/70
M-2345	Coeur d'Alene Mt, Idaho (K. Scates 583)	6/7/70
M-2350	Farragut State Park, Idaho (K. Scates 593)	6/6/70
M-2348	E Hayden, Idaho (K. Scates 590)	6/7/70

Discussion: Refer to the discussion under R. magnipes.

PLATE XXII

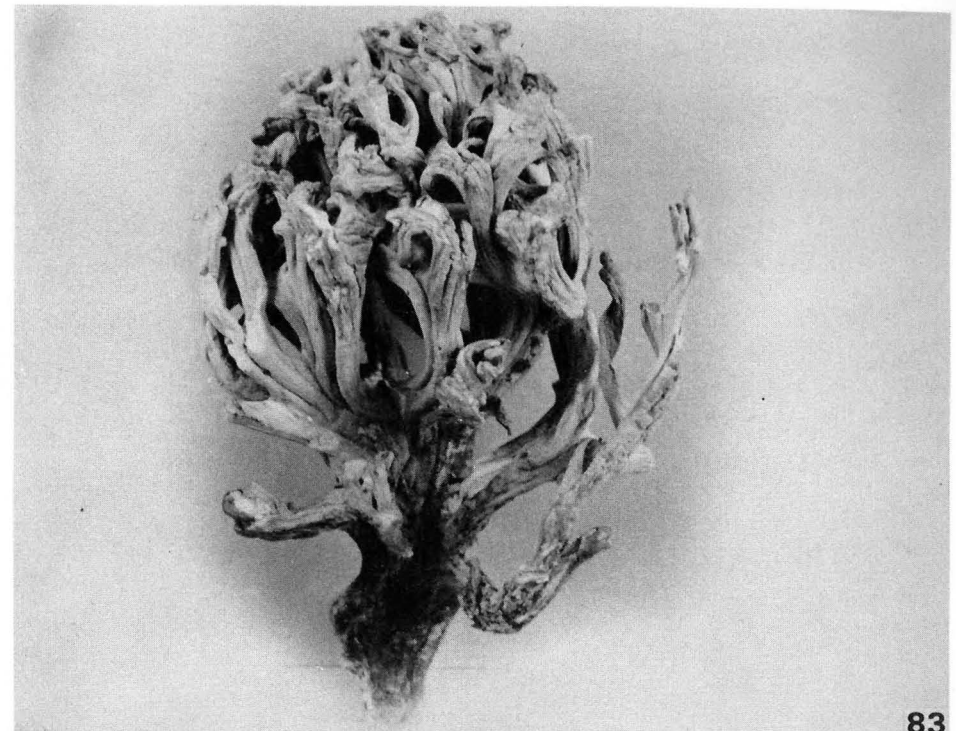
Species of Subgenus Laeticolora

Figure

83. R. obtusissima

Collection

Type (NYS)



83

84. R. rasilispora var. rasilispora

Fruiting bodies 5-15 cm tall x 6-15 cm broad

M-956 (Type)



84