

## *Albatrellus caeruleoporus* (Peck) Pouzar

**ROD name** *Albatrellus caeruleoporus*

**Family** Scutigeraceae      **Morphological Habit** polypore

**Description:** CAP to 6 cm broad, more or less circular, more or less smooth, gray to indigo blue maturing to pale gray brown. PORE SURFACE gray to blue, drying brown to bright red-orange. PORES angular, (1-) 2-3 (-5) mm. STEM central, sometimes multiple, blue. FLESH cream to pale tan, tube layer losing blue coloration, becoming red-brown when dried. HYPHAL STRUCTURE monomitic. CLAMP CONNECTIONS absent. SPORES ovoid to subglobose, 4-6 x 3-5  $\mu\text{m}$ , smooth, hyaline, inamyloid.

**Distinguishing Features:** Characterized by a fleshy annual polypore, gray-blue pore surface with a circular cap and white spore print. *Albatrellus flettii* is larger, and has a white pore surface (salmon colored at maturity), clamp connections, and smaller spores (3.5-4 x 2.5-3  $\mu\text{m}$ ).

**Distribution:** Known from eight sites within the range of the northern spotted owl: CALIFORNIA, Humboldt Co., Redwood National Park, Prairie Creek, Rhododendron trail; OREGON, Clackamas Co., Wemme; Lane Co., Honeyman State Park; Willamette National Forest, near O'Dell Lake; WASHINGTON, Clallam Co., Olympic National Park, Lake Mills trail; Island Co., Whidbey Island; Snohomish Co., Mount Baker-Snoqualmie National Forest, Barlow Pass; Lake Hannan. Also known from the northeastern United States.

**Substrate and habitat:** This is a terrestrial polypore and is a presumed mycorrhiza former with *Tsuga* spp.

**Season:** Fruits from September through November.

**References:** GILBERTSON, R.L., AND RYVARDEN, L. 1986. North American Polypores. Vol. 1. Fungi Flora, Oslo. SMITH A.H., SMITH, H.V., AND WEBER, N.S. 1981. How to Know the Non-Gilled Mushrooms. Wm. C. Brown County, Dubuque.

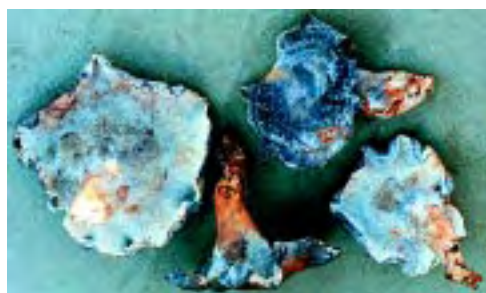
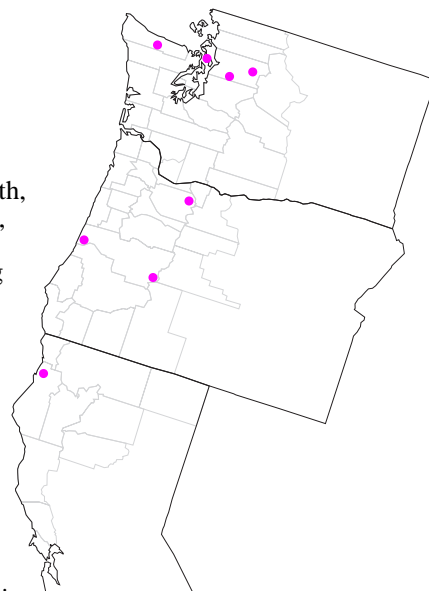


Photo courtesy of D. Arora  
Photo courtesy of University of Michigan

PHOTO ONLY AVAILABLE IN PRINTED VERSION